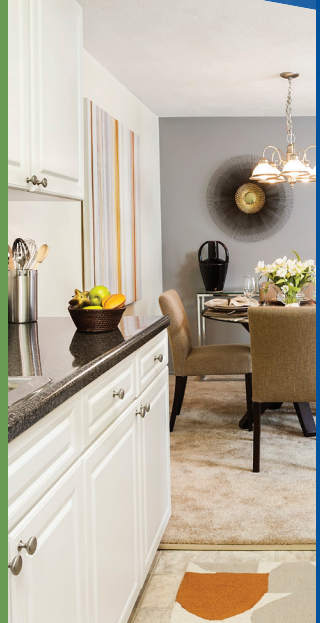
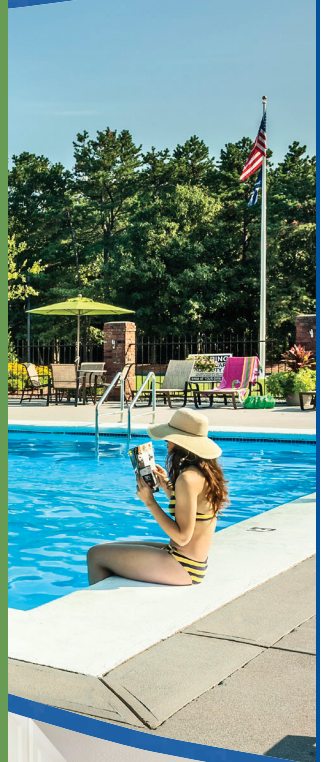


Village Green Start *Living*



VILLAGE GREEN



Village Green is an ideal location for everything you like to do: shopping, dining and recreation. The wide range of studio, one and two bedroom styles feature gourmet kitchens, dining areas, walk-in closets and patios/balconies. Step outside and enjoy a quiet picnic, a game of tennis or just relax by the resort-style pool.

Surrounded by tall trees and rolling hills, Village Green is conveniently located near public transit and within minutes of I-495 and I-95. It's an easy commute to Boston and Providence.

Call Today! (508) 643-0700

FEATURES AND AMENITIES

- Brand new clubhouse including pool, lounge, Internet café, activity room, fitness center, movie theatre, home office center, and conference room
- Several single-level floor plans to choose from
- Updated kitchens and appliances
- Wall-to-wall carpeting
- On-site laundry facilities
- Generous closet space and storage
- Individually controlled heat and air conditioning
- Large well-landscaped courtyards
- Tennis & basketball court
- Handicap access
- Pet friendly
- Online rent payment
- 24-hour maintenance response guarantee

Residence features are subject to change and may be available in select apartments only.



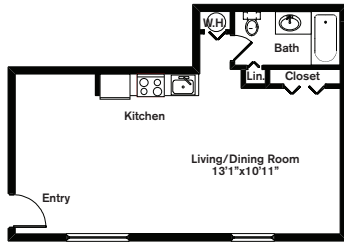
Village Green Start *Living*

VILLAGE GREEN



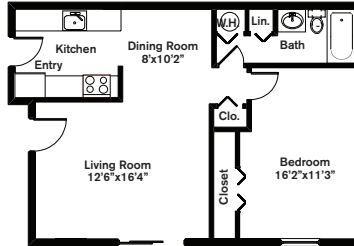
Studio ~ 1 Bath (500 sq. ft.)

Standard



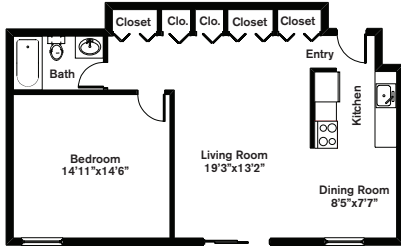
One Bedroom ~ 1 Bath (725 sq. ft.)

Style 1



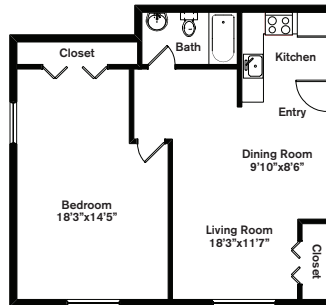
One Bedroom ~ 1 Bath (725 sq. ft.)

Style 2



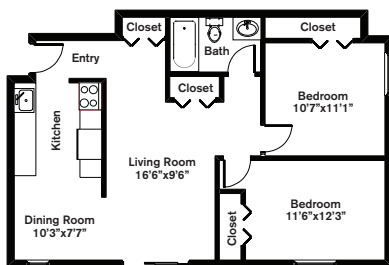
One Bedroom ~ 1 Bath (600 sq. ft.)

Style 3



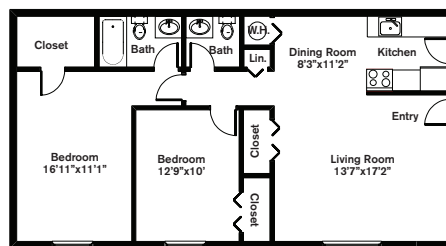
Two Bedrooms ~ 1 Bath (800 sq. ft.)

Style 1



Two Bedrooms ~ 1.5 Baths (900 sq. ft.)

Style 2



Variations may occur in some floor plan styles. Dimensions and square foot measurements are approximate.



LEASING OFFICE 71 Messenger Street, Plainville, MA 02762

Please check website or contact the leasing office for hours.

(508) 643-0700 | CHR-Apartments.com @CHR.VG.Apartments @VillageGreenCHR



Chestnut Hill Realty