

1443 Beacon

Start *Living*

 *Signature*  
COLLECTION  
APARTMENT HOMES

1  
4  
4  
3  
B  
E  
A  
C  
O  
N



*1443* Beacon Apartments, located in the heart of the vibrant Coolidge Corner area, offer the ultimate in sophisticated living. These spacious apartments offer the finest amenities and easy access to the best of Brookline. Walk to shops, restaurants, cafés, the historic independent movie theater, Trader Joe's, Whole Foods and so much more!

1443 Beacon offers a mix of one, two, and three bedroom luxury residences. All apartment homes are finished in an open and contemporary style. Kitchens feature European-style cabinets, and stainless steel appliances. From ceramic tile in the bathroom to walk-in closets in the master bedroom, you will love the elegant touches throughout your apartment home.

**Call Today! (617) 566-1443**



#### FEATURES AND AMENITIES

- On-site concierge
- On-site management and service
- Open floor plans
- Magnificent views
- Newly remodeled apartment homes with designer kitchens, and ample storage
- Granite or quartz countertops and islands
- Stainless steel appliances
- Screened-in balconies
- Hardwood floors
- Recessed lighting
- Large custom bedroom closets
- Central air and heat
- Pool, sundeck, and outdoor BBQ
- Fitness center
- Package concierge and "away from home" mail and newspaper delivery
- Garage parking
- Elegant community room with catering kitchen
- Dry cleaning pickup/delivery available
- Taxi telephone service
- Steps to the T
- Online rent payments
- 24/7 emergency maintenance response

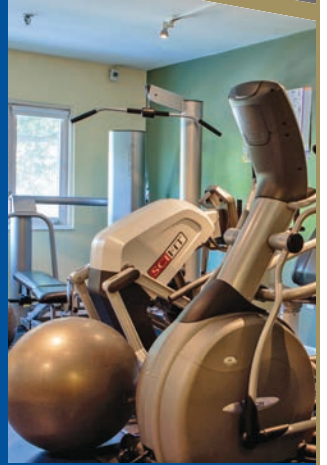
*Residence features are subject to change and may be available in select apartments only.*

# 1443 Beacon

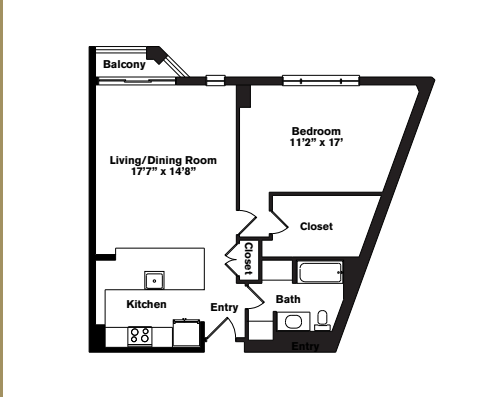
Start *Living*



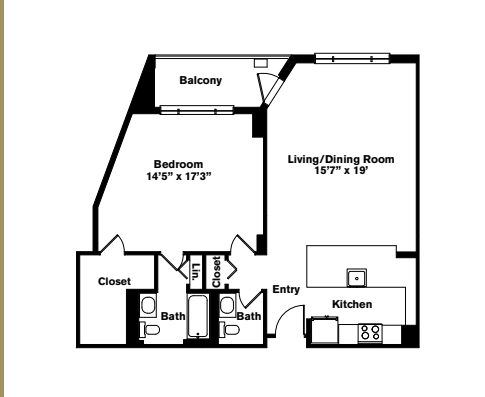
1  
4  
4  
3  
B  
E  
A  
C  
O  
N



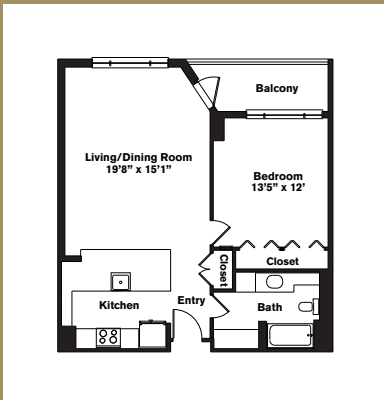
One Bedroom ~ 1 Bath (879 sq. ft.)



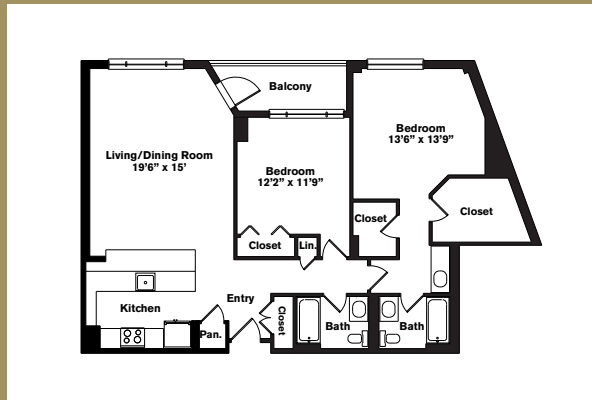
One Bedroom ~ 1.5 Baths (984 sq. ft.)



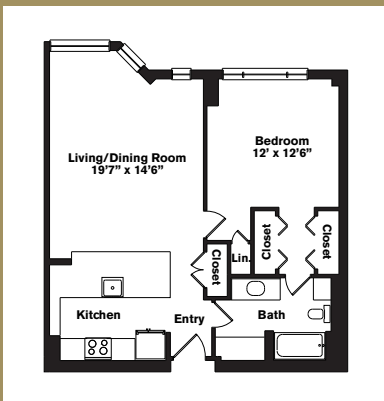
One Bedroom ~ 1 Bath (852 sq. ft.)



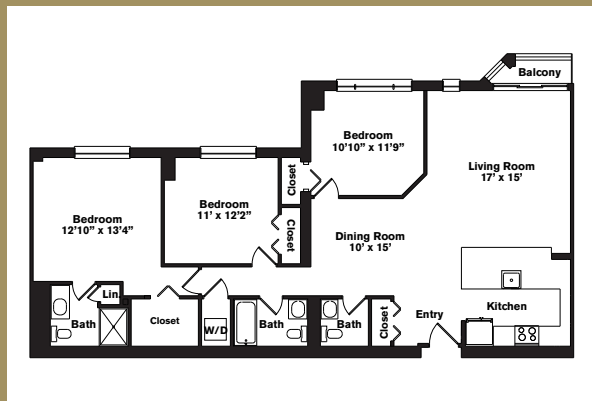
Two Bedrooms ~ 2 Baths (1,271 sq. ft.)



One Bedroom ~ 1 Bath (804 sq. ft.)



Three Bedrooms ~ 2.5 Bath (1,447 sq. ft.)



Variations may occur in some floor plan styles.  
Dimensions and square foot measurements are approximate.



LEASING OFFICE 1443 Beacon Street, Brookline, MA 02446  
HOURS Mon, Tues, Thurs, Fri: 9 am - 6 pm | Wed: 9 am - 7 pm | Sat: 10 am - 4 pm | Sun: 11 am - 3 pm

(617) 566-1443 | CHR-Apartments.com | @CHR.Apartments | @1443BeaconStApt



Chestnut Hill Realty