

Fenway Diamond

Start *Living*



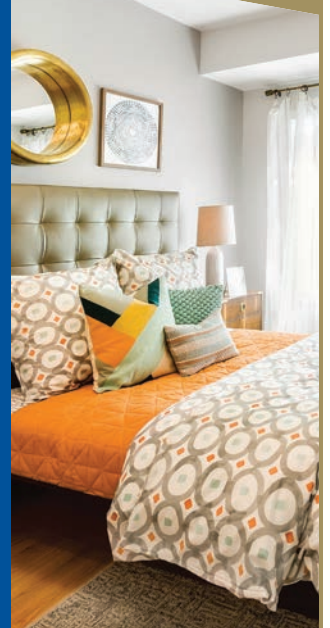
FENWAY DIAMOND



Fenway Diamond luxury apartments are located in one of Boston's most engaging and dynamic neighborhoods. These brand new studio, one and two bedroom residences offer upscale contemporary finishes and open floor plans. Located in a walkable and convenient area only steps from Kenmore Square, historic Fenway Park, restaurants and the world-class cultural institutions, there's always something new to discover. The Fenway-Kenmore area offers a mix of modern apartments and classic architecture. Near the heart of downtown Boston, Fenway is far enough removed to have its own unique charm, while still maintaining an urban edge. Fenway Diamond boasts a prime location in a pedestrian and bike friendly neighborhood. Residents can enjoy the convenience of a state-of-the-art on-site fitness center, free Wi-Fi in the lobby, online rent payment, and available garage parking.

FEATURES AND AMENITIES

- New construction
- Airy, open-concept floor plans with large windows
- Modern interiors
- Hardwood floors
- European-style kitchen cabinets
- Granite kitchen countertops
- Stainless steel appliances
- In-unit washer and dryer
- Custom bedroom closets
- Central air
- Recessed lighting
- Marble bathroom countertops
- Pet friendly
- Free Wi-Fi in the lobby
- On-site fitness center
- Secured garage parking available
- Online rent payment
- 24-hour maintenance response guarantee



Call Today! (617) 566-1443



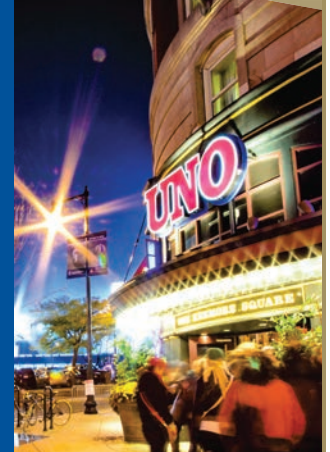
Residence features are subject to change and may be available in select apartments only.

Fenway Diamond

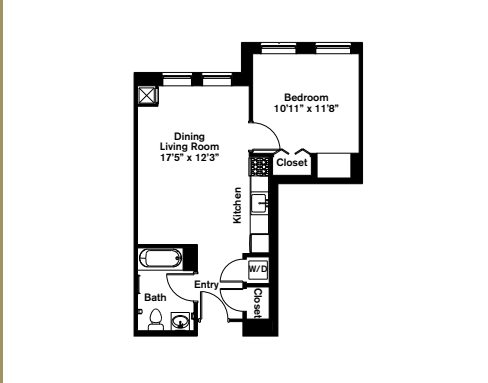
Start *Living*



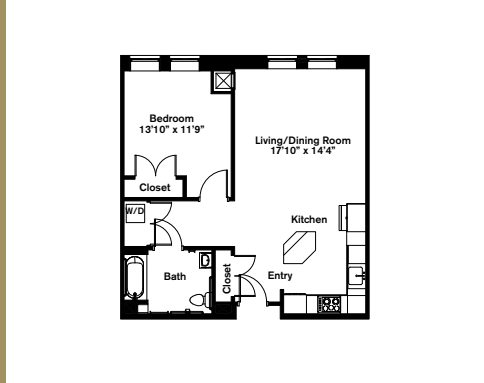
FENWAY DIAMOND



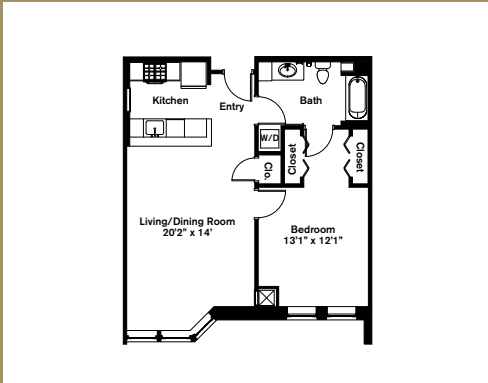
Studio ~ 1 Bath (551 sq. ft.)



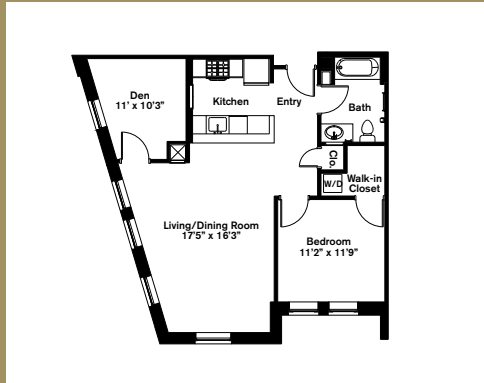
One Bedroom ~ 1 Bath (742 sq. ft.)



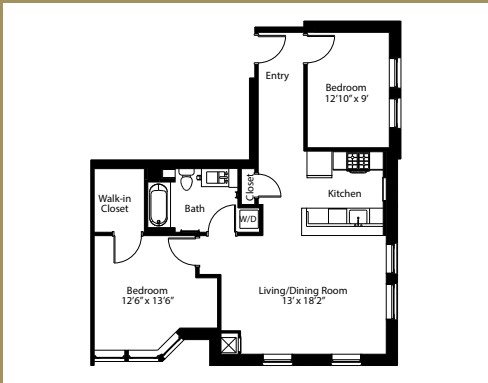
One Bedroom ~ 1 Bath (774 sq. ft.)



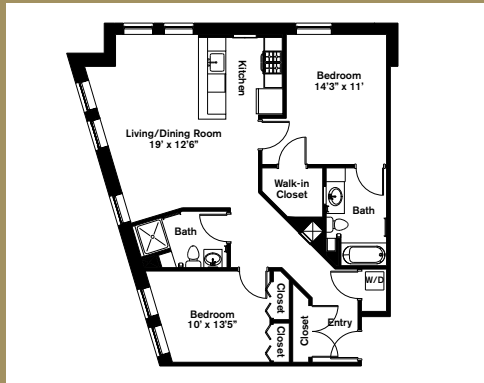
One Bedroom plus Den ~ 1 Bath (826 sq. ft.)



Two Bedroom ~ 1 Bath (883 sq. ft.)



Two Bedrooms ~ 2 Bath (1,029 sq. ft.)



Variations may occur in some floor plan styles.
Dimensions and square foot measurements are approximate.



Fenway Diamond, 9 Miner Street, Boston, MA 02215
LEASING OFFICE 1443 Beacon Street, Brookline, MA 02446
HOURS Mon, Tues, Thurs, Fri: 9am-6pm | Wed: 9am-7pm | Sat: 10am-4pm | Sun: 11am-3pm

(617) 566-1443 | CHR-Apartments.com @CHR.Apartments



Chestnut Hill Realty