



Regency Plaza

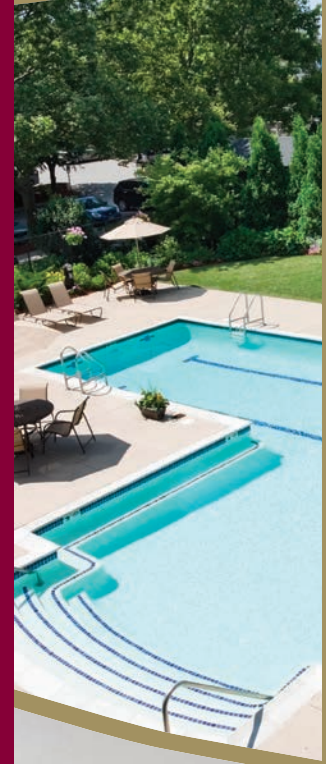
Start *Living*



Signature
COLLECTION

APARTMENT HOMES

R
E
G
E
N
C
Y
P
L
A
Z
A



Regency Plaza, an upscale high-rise apartment community, sits on beautifully landscaped grounds nestled in the heart of downtown Providence with spectacular city views. Residents of Regency Plaza live in the center of the action. The financial district is within easy walking distance, as are hospitals, the Providence Place Mall, the Convention and Civic Centers, and many fine restaurants and specialty food shops. Located within minutes of all major transportation routes, Regency Plaza offers easy access to I-95, I-195, Route 146, as well as the commuter rail to Boston and New York.

Call Today! (401) 861-0400

FEATURES AND AMENITIES

- Free heat, hot water, central air
- Spacious floor plans and custom suites
- 24-hour concierge service
- Private storage available
- On-site lot and garage parking
- Gated community and controlled building access
- Resident lounge with catering kitchen
- Internet café and conference rooms with Wi-Fi
- Private movie theatre
- Day spa, gourmet market and deli
- Fitness center with personal trainers
- Heated swimming pool and Jacuzzi
- Tennis court and putting green
- Patio with gas grills
- Pet friendly and on-site dog park
- Online rent payment
- 24-hour maintenance response guarantee
- Community sponsored resident events

Residence features are subject to change and may be available in select apartments only.





Regency Plaza

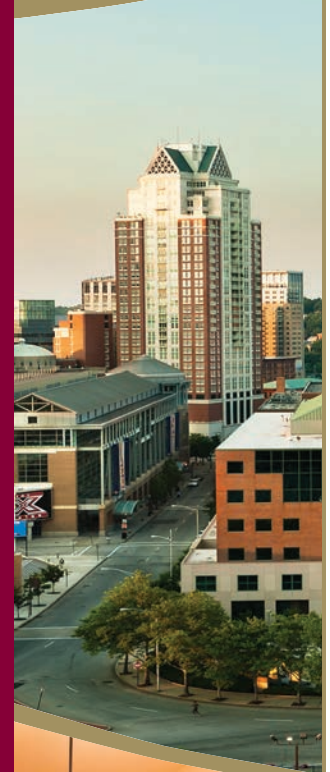
Start *Living*



Signature
COLLECTION

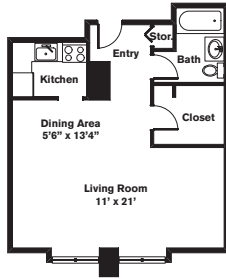
APARTMENT HOMES

REGENCY PLAZA



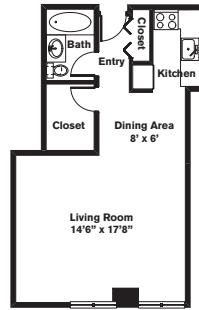
Studio ~ 1 Bath (535 sq. ft.)

One Regency Plaza



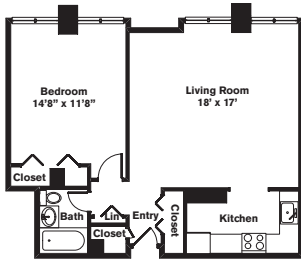
Studio ~ 1 Bath (525 sq. ft.)

Two & Three Regency Plaza



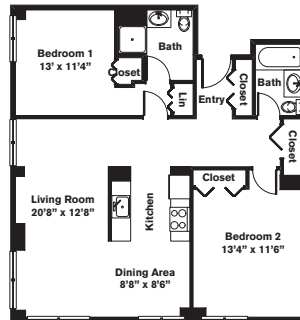
One Bedroom ~ 1 Bath (763 sq. ft.)

One Regency Plaza



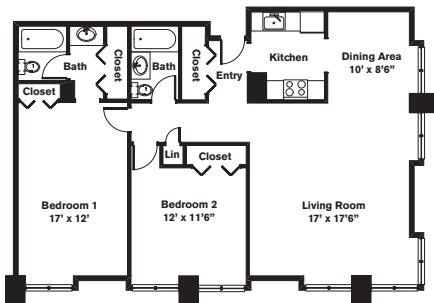
Two Bedrooms ~ 2 Baths (1,053 sq. ft.)

Two & Three Regency Plaza



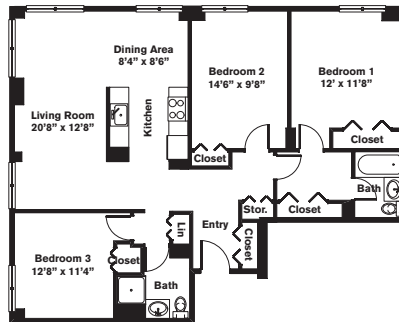
Two Bedrooms ~ 2 Baths (1,087 sq. ft.)

One Regency Plaza



Three Bedrooms ~ 2 Bath (1,245 sq. ft.)

Two & Three Regency Plaza



Variations may occur in some floor plan styles. Dimensions and square foot measurements are approximate.



LEASING OFFICE One Regency Plaza, Providence, RI 02903

HOURS Mon-Thurs: 9 am-7 pm | Fri: 9 am-5 pm | Sat: 10 am-5 pm | Sun: 12 am-5 pm

(401) 861-0400 | RegencyPlaza.com | @RegencyPlazaApartments | @RegencyPlazaApt



Chestnut Hill Realty