

Village Green Start *Living*



Village Green is an ideal location for everything you like to do: shopping, dining and recreation.

The wide range of studio, one and two bedroom styles feature gourmet kitchens, dining areas, walk-in closets and patios/balconies. Step outside and enjoy a quiet picnic, a game of tennis or just relax by the resort-style pool.

Surrounded by tall trees and rolling hills, Village Green is conveniently located near public transit and within minutes of I-495 and I-95. It's an easy commute to Boston and Providence.

Call Today! (508) 643-0700

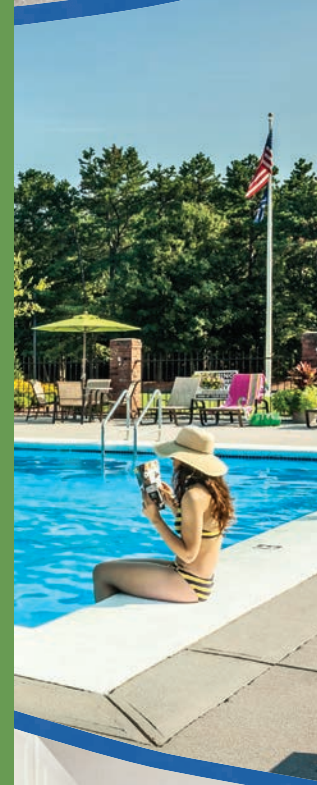


FEATURES AND AMENITIES

- Brand new clubhouse including pool, lounge, Internet café, activity room, fitness center, movie theatre, home office center, and conference room
- Several single-level floor plans to choose from
- Updated kitchens and appliances
- Wall-to-wall carpeting
- On-site laundry facilities
- Generous closet space and storage
- Individually controlled heat and air conditioning
- Large well-landscaped courtyards
- Tennis & basketball court
- Handicap access
- Pet friendly
- Online rent payment
- 24-hour maintenance response guarantee

Residence features are subject to change and may be available in select apartments only.

VILLAGE GREEN



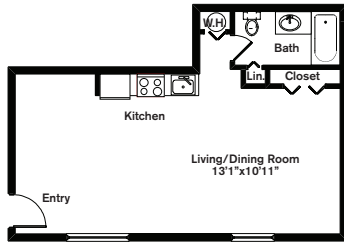
Village Green Start *Living*

VILLAGE GREEN



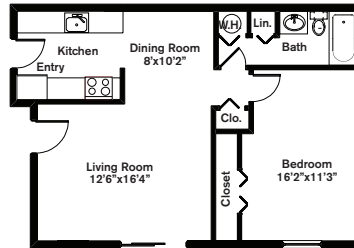
Studio ~ 1 Bath (500 sq. ft.)

Standard



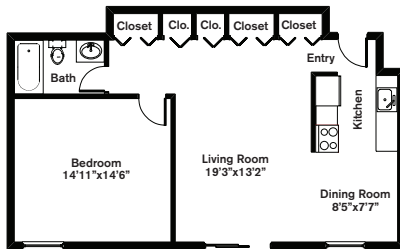
One Bedroom ~ 1 Bath (725 sq. ft.)

Style 1



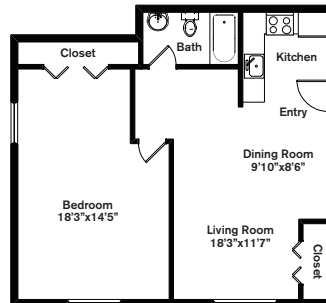
One Bedroom ~ 1 Bath (725 sq. ft.)

Style 2



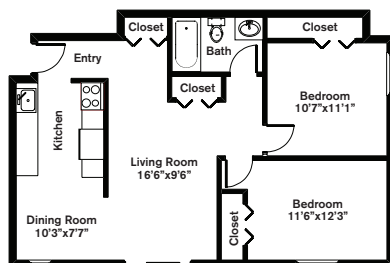
One Bedroom ~ 1 Bath (600 sq. ft.)

Style 3



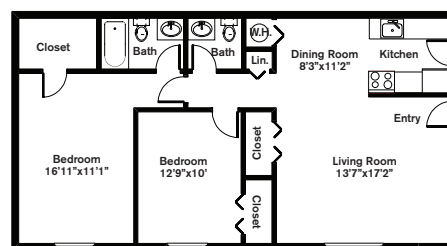
Two Bedrooms ~ 1 Bath (800 sq. ft.)

Style 1



Two Bedrooms ~ 1.5 Baths (900 sq. ft.)

Style 2



Variations may occur in some floor plan styles. Dimensions and square foot measurements are approximate.



LEASING OFFICE 71 Messenger Street, Plainville, MA 02762

HOURS Mon - Thur: 9 am - 6 pm | Fri: 9 am - 5 pm | Sat: 10 am - 4 pm | Sun: 11 am - 3 pm

(508) 643-0700 | CHR-Apartments.com | @CHR.VG.Apartments | @VillageGreenCHR



Chestnut Hill Realty