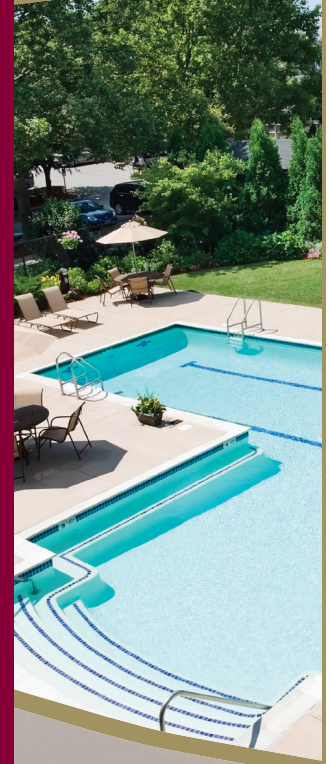
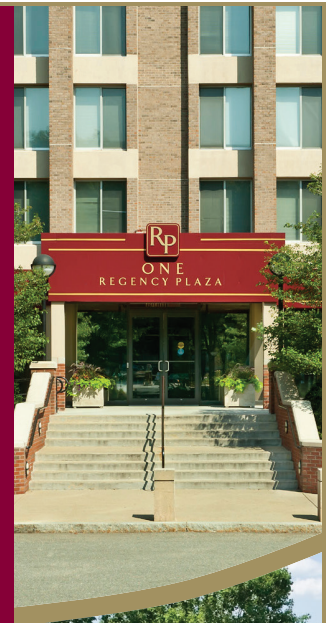




Regency Plaza Corporate Housing

Where Luxury Meets Convenience

REGENCY PLAZA



Nestled in the heart of Providence, Rhode Island's Creative Capital, the Regency Plaza boasts a landmark location in the center of an active and thriving business, arts and educational community. Comprising three mid-rise towers of spacious apartments with expansive views of the city and a full range of amenities and services, short-term housing at Regency Plaza is an excellent alternative to costly and impersonal hotel stays.

Fully furnished and move-in ready

All utilities included

One month minimum stay

Easy access to Amtrak station, I-95, I-195, Route 146 and TF Green airport

PRICING

- Studio: starting from \$2,845
- 1 Bedroom: \$3,445-\$3,599
- 2 Bedrooms: \$3,875-\$4,125
- 3 Bedrooms: \$4,345

APARTMENT FEATURES

- Spacious floor plans
- Fully furnished
- Work station
- Household amenities package: kitchen, bath and bedroom(s)
- All utilities, including basic cable
- Central AC
- City views

COMMUNITY FEATURES AND SERVICES

- 24-hour concierge
- Heated pool and Jacuzzi
- Tennis court
- Putting green
- Patio with gas grills
- Fitness center with personal trainers
- Day spa
- Convenience market and deli
- Business center
- Conference rooms
- Resident lounge
- Outdoor and garage parking
- On-site zip cars
- 24 x 7 maintenance
- Dry cleaning service
- Package acceptance
- Pet friendly





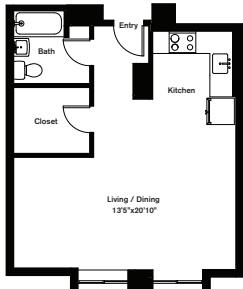
LOCATION

Johnson & Wales University	0.3
Amtrak / MBTA Station	0.6
Rhode Island Medical Center	0.6
Women & Infants Hospital	0.6
Rhode Island School of Design	0.7
Brown University	0.8
Providence College	1.7
Rhode Island College	2.2
TF Green Airport	6.2



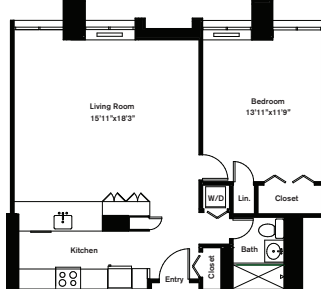
ONE REGENCY PLAZA

Studio, 1 Bath - Rise 8 • 500 SF
Arlington Open Premium



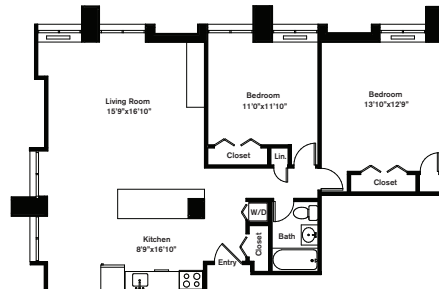
ONE REGENCY PLAZA

1 Bed, 1 Bath - Rise 11 • 731 SF
Arlington Open Premium



ONE REGENCY PLAZA

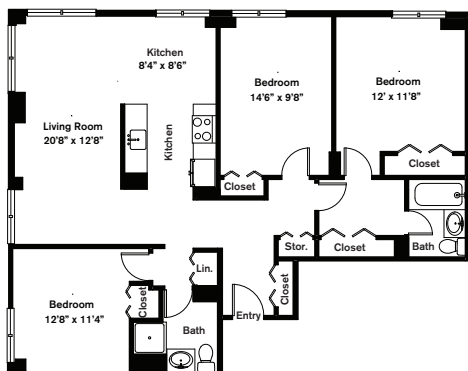
2 Beds, 1 Bath - Rise 15 • 1,001 SF
Arlington Open Premium



Variations may occur in some floor plan styles. Dimensions and square foot measurements are approximate.

TWO AND THREE REGENCY PLAZA

3 Beds, 2 Baths - Rise 11
1,245 SF • Berkeley



Chestnut Hill Realty

CONTACT INFORMATION

One Regency Plaza
Providence, RI 02903
(833) 373-2822
RPCorpApts.com